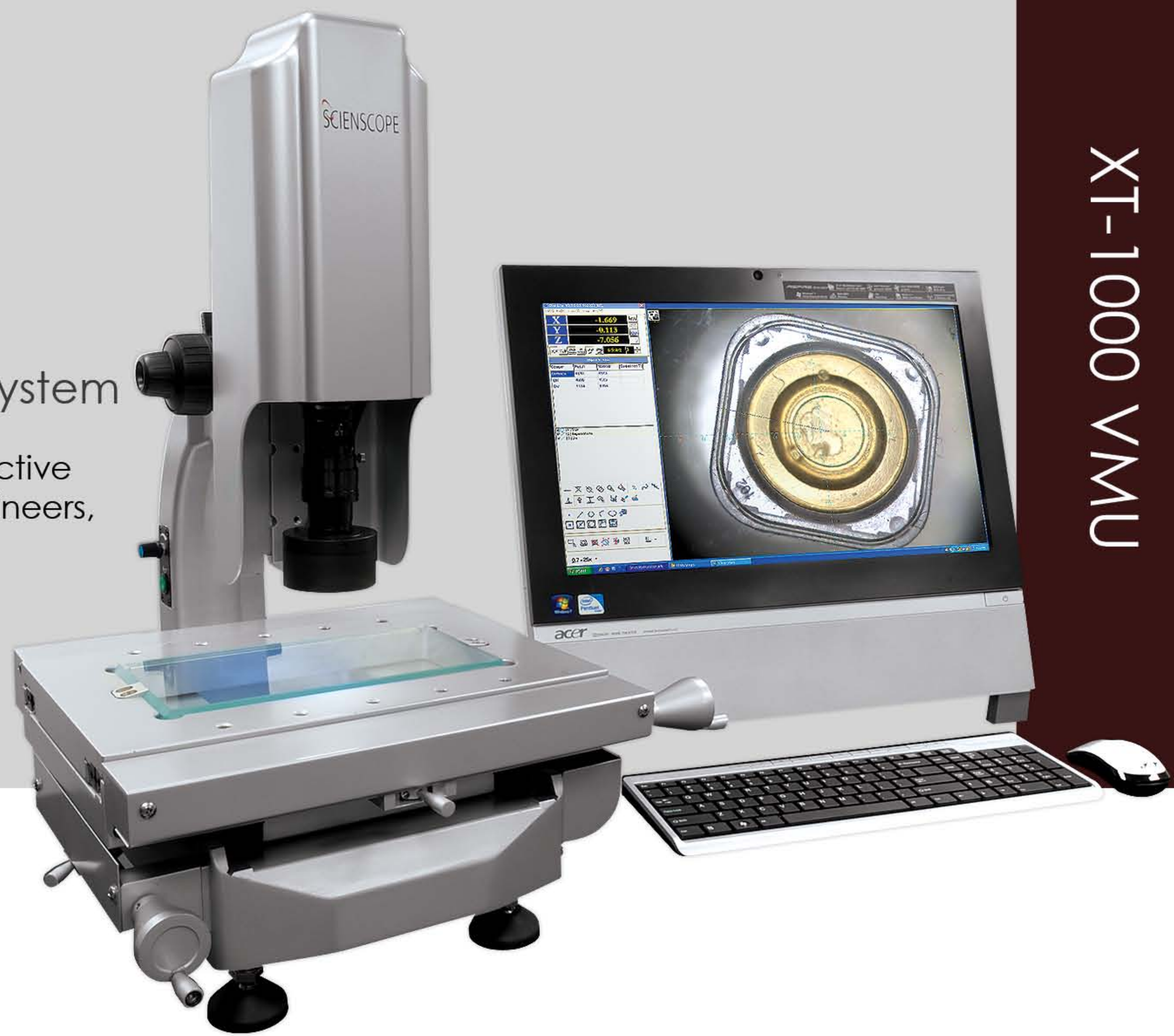


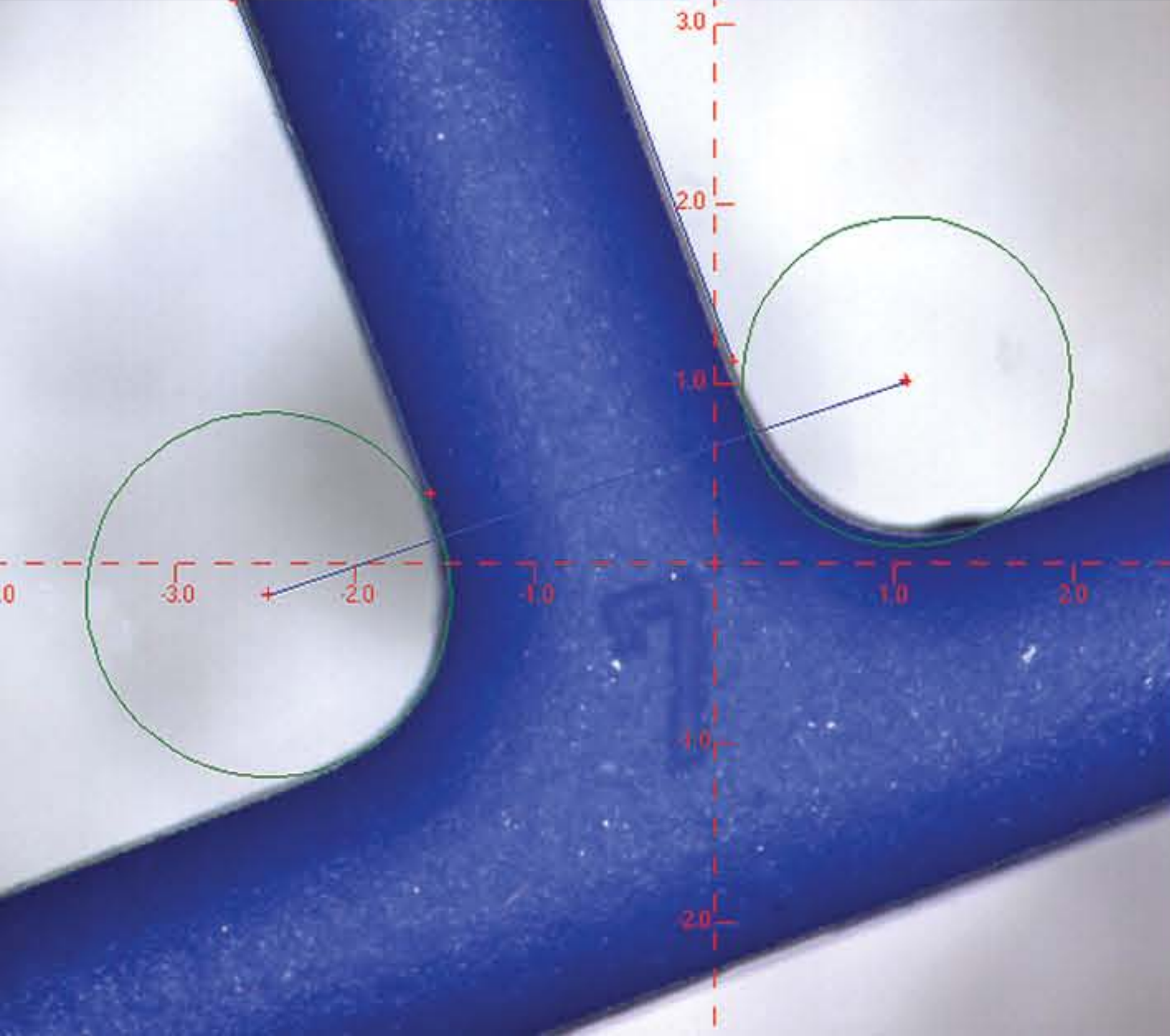
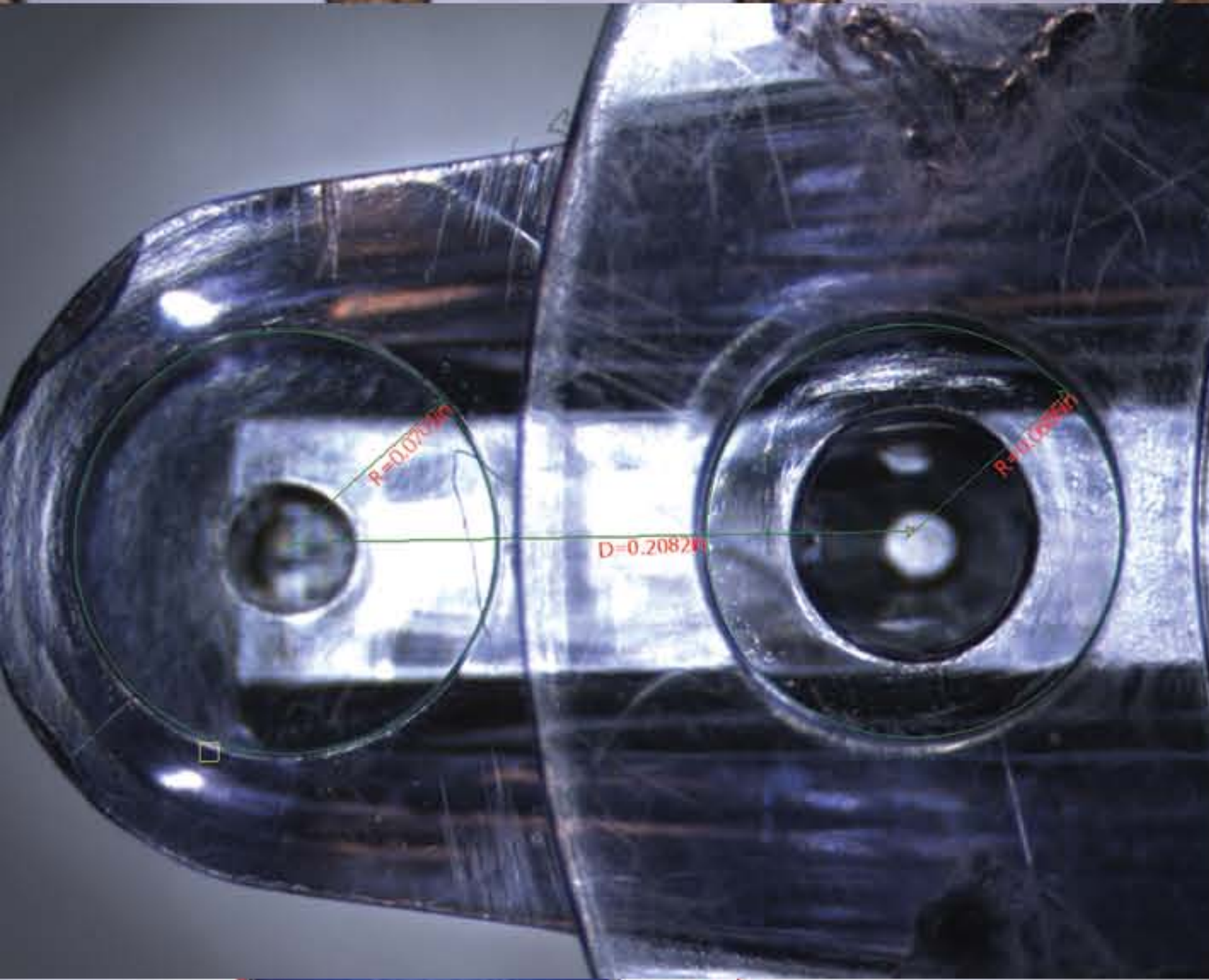
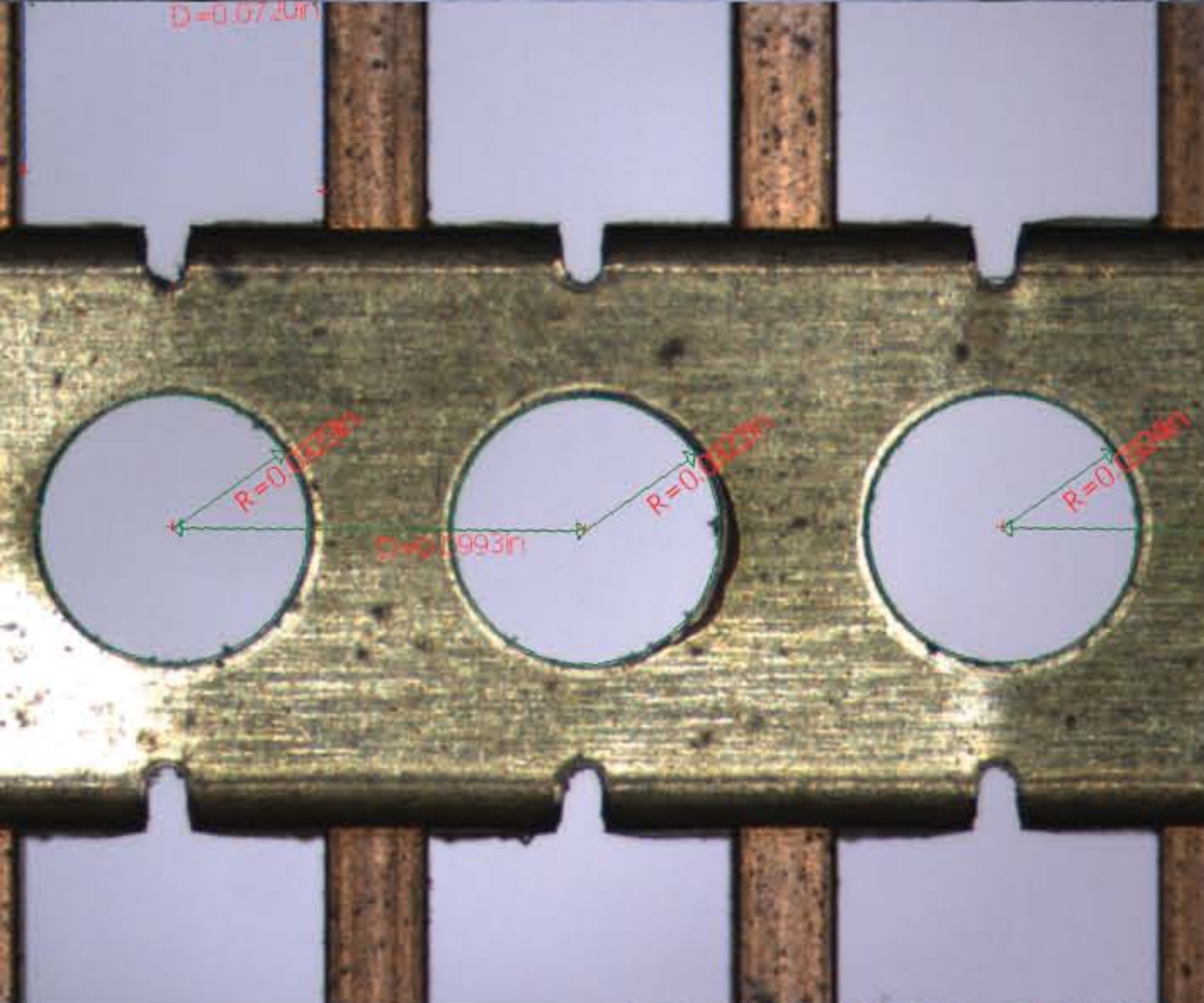
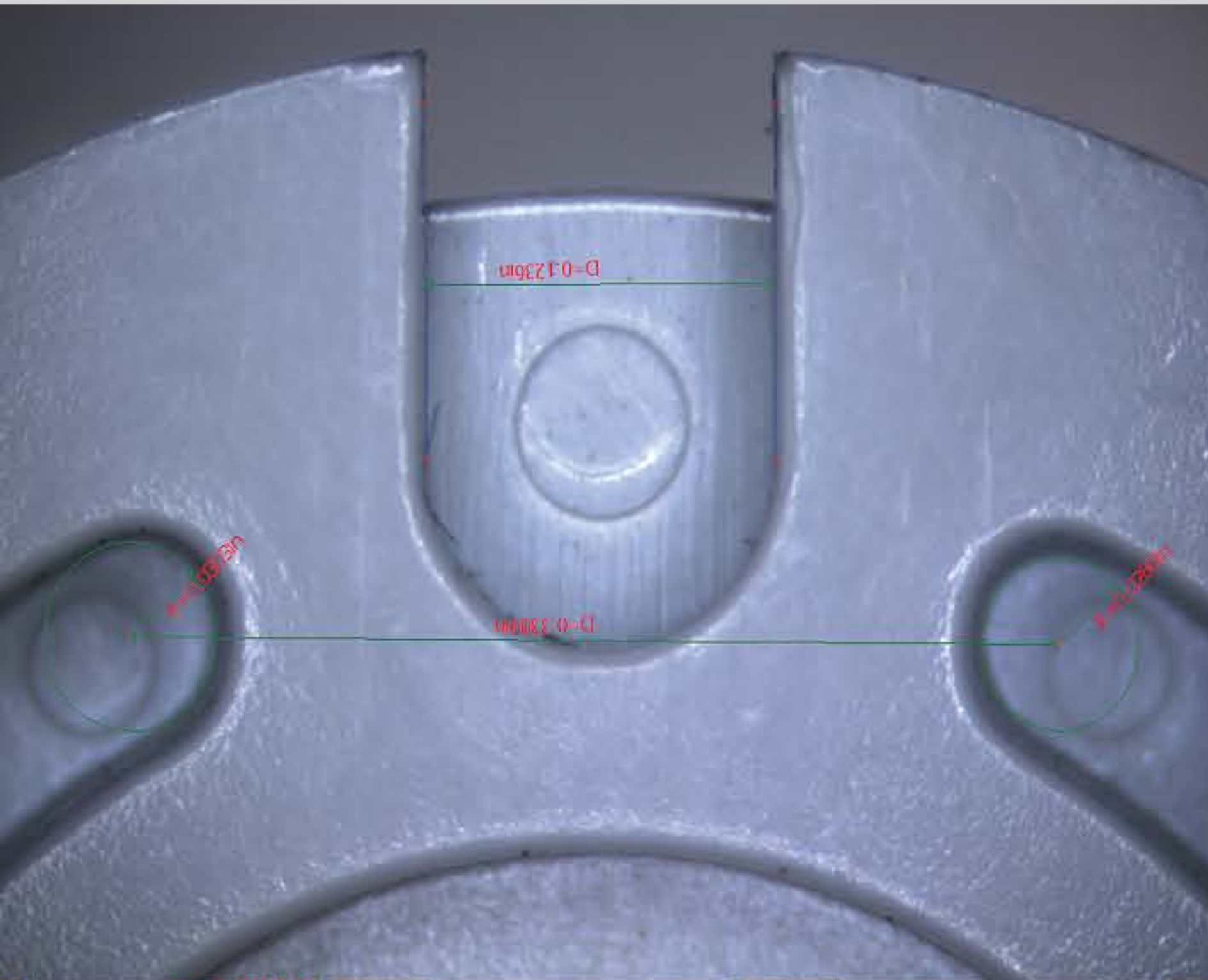
XT-1000 VMU

Aluminum Alloy Touchscreen Measurement System

The XT-1000 VMU is a 2-axis, compact, easy to use, cost effective desktop system for small part inspection. It is perfect for engineers, researchers, designers and anyone inspecting small parts.



XT-1000 VMU



Key features

- Compact Aluminum Alloy System
- 1 Micron Resolution Optical Encoder XY Scales
- 1/2" Color 1.3 Megapixel Live Imaging
- High Resolution Zoom Lens with magnification detent
- Quick Lock/Release X/Y Stage
- Software controlled Quad LED Top Light
- Collimated LED Back Light
- Intuitive visually controlled software
- Computer system & software included
- 1 Year Full Warranty

Measurement Software User Interface

- Program inspection sequence
- Single or Multi point edge detection
- Large high resolution image
- Image capture with annotation
- Cross hair with edge detection
- Measures point, line, circle, arc, angle, ellipse, B-splinecurve, center point, distance, and more
- Multiple datums
- Quick and easy measurement
- Import and export DXF files
- Large live image screen
- Computer system & software included

PRODUCT SPECIFICATIONS

XT-1000 VMU

Machine Vision



1. 1/2" color 1.3 megapixel USB Digital Camera
2. Zoom lens with detents
3. USB interface for direct connection to PC.
4. Computer & Software
5. Fine/Coarse Focus knob

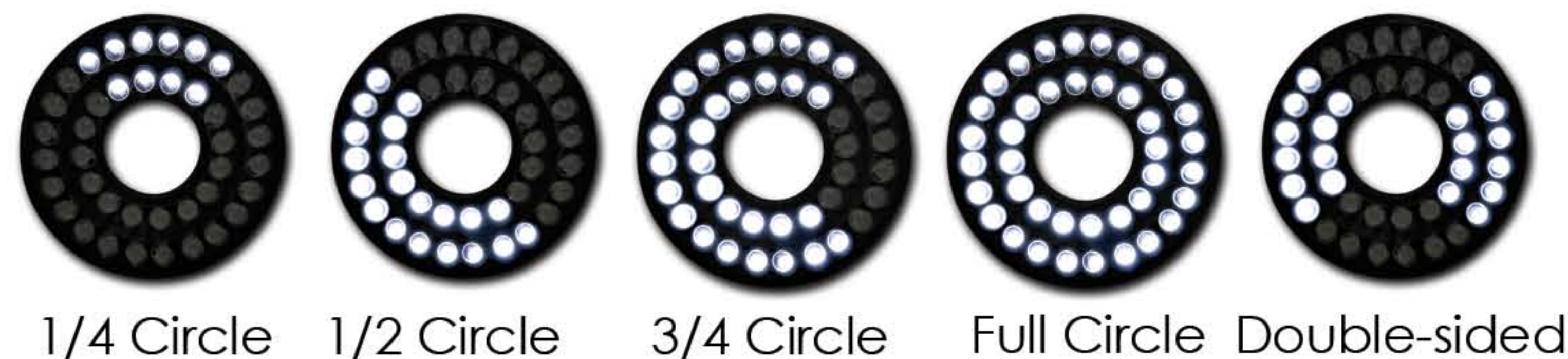


Stage



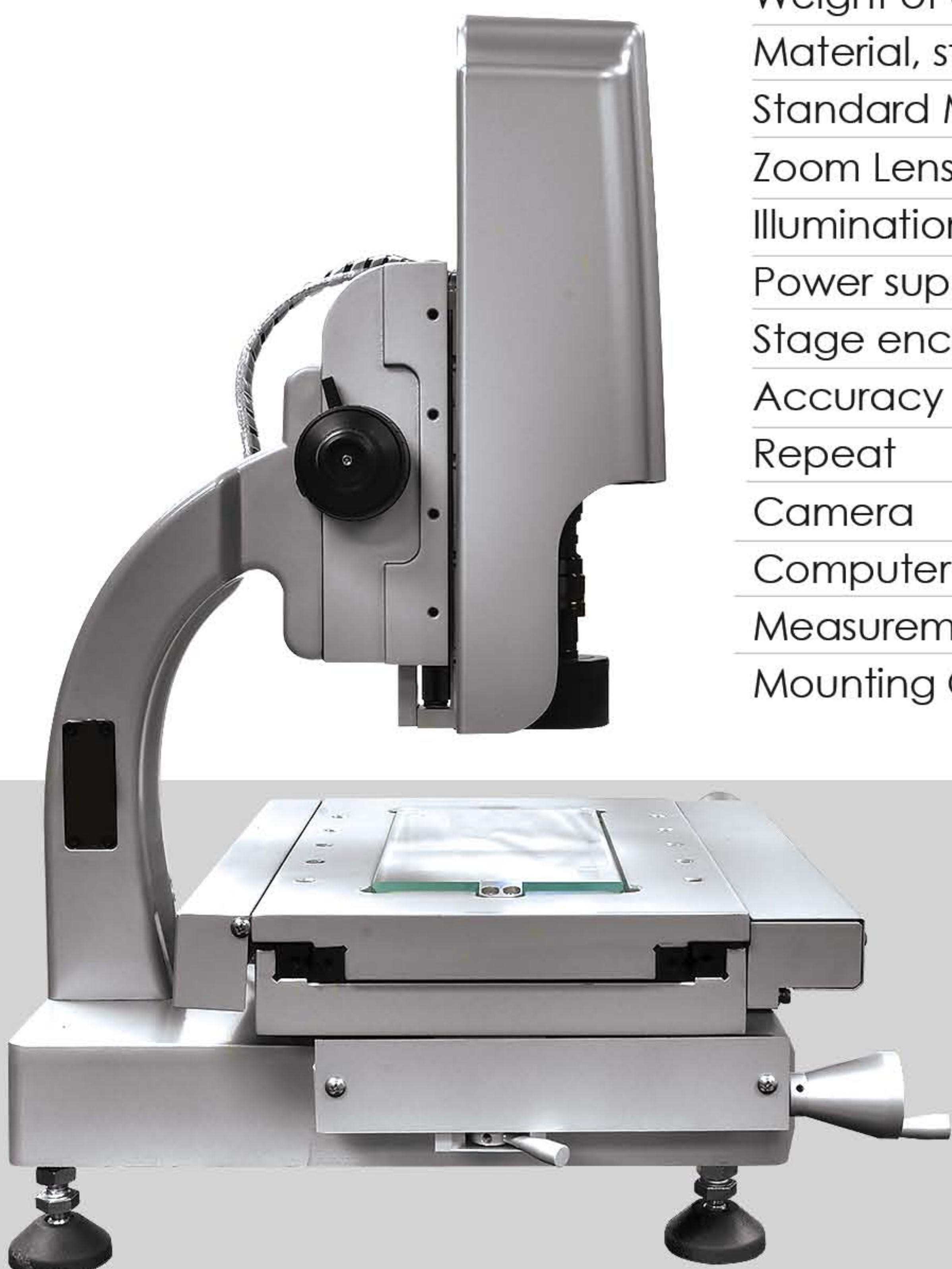
1. Glass Stage
2. Built-in 1 micron resolution glass encoder scale (X/Y)
3. Y-axis stage move knob
4. Collimated Backlight
5. Y-Axis Stage Lock / Quick Release
6. X-axis stage move knob
7. X-Axis Stage Lock / Quick Release

A. Quadrant 40-bulb LED Toplight



Specifications

Model Numbers	XT-VMU-480 XYD
Measuring Range	4" x 8"
Z-axis travel, for focusing only	3", above focusing on the stage glass
Stage load capacity	22 lbs
Overall size	18" x 17" x 25", D x W x H
Weight of measuring unit	60 lbs
Weight of computer/monitor	21 lbs
Material, stage and frame	Aluminum Alloy
Standard Magnification	22x to 142x
Zoom Lens	0.7 – 4.5 detented for repeatable magnification settings
Illumination	Quad LED top & Collimated back light
Power supply	100-127/220-240 VAC, 50/60 Hz, 6/3 amp
Stage encoder resolution	1 μ m
Accuracy (X,Y) at 20°C	(3 + L/200) μ m, L in mm
Repeat	\pm 1 μ m
Camera	1/2" Color USB 1.3 megapixel digital camera
Computer	Computer system & software included
Measurement Software	SCIENSCOPE MUMA Lite (MUMA PRO optional)
Mounting Options	Customer table top (standard); Workstation table (optional)



SCIENSCOPE International Inc.

Business Hours Monday ~ Friday (8AM~5PM PST/PDT)
 Phone (800) 216-1800 Toll-Free, (909) 590-7273
 FAX (909) 494-5513
 Address 5751 Schaefer Ave. Chino, CA 91710
 Website <http://www.scienscope.com/>
 E-Mail info@scienscope.com



SCAN TO RFQ